





FACTUAL



BBC
ONE

IMAGINE

BBC One puts a fresh face on the arts as Alan Yentob presents *Imagine*, a regular look at the people and topics making waves in galleries and concert halls, on catwalks and in theatres and in opera houses and museums.

Documentaries go behind the scenes, with stories featuring everything from contemporary music and modern dance, to classical ballet and sculpture, and cast new light on the visual arts, theatre, photography and fashion.

Alan shares his passion for the arts in this range of single films reflecting the richness and diversity of modern cultural interests.

INNOVATION NATION

Everyone has those "why don't they invent something to..." moments, and now everyone has the chance to prove they can do just that. This year, BBC One is throwing down the gauntlet to all those would-be inventors and asking them to take part in a nationwide search for ideas which can be turned into reality.

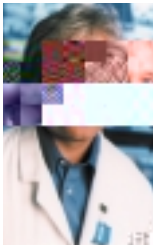
Launching with a 60-minute special, *Innovation Nation* celebrates invention with a look at the ideas that have changed the world or made everyday living easier. The programme puts out a call to budding inventors to get thinking and to submit some life-changing ideas of their own. *Innovation Nation* will give one team the chance of a lifetime to get their idea marketed and on to the shelves.

Through the year, the entries will be whittled down to a chosen few which make it off paper and into a working prototype. The public will vote to find the winner. Young inventors, too, can be part of *Innovation Nation* by competing for awards of their own, and the invention theme will be picked up in programmes across the BBC.

MAGIC BULLETS

Nobel Prize-winning scientist Paul Nurse explores the exciting breakthroughs in the treatment of cancer in the last 20 years. The programme follows the experiences of three people fighting the biggest battle medicine has ever waged.

Paul Nurse says: "Throughout my life, I've had a passionate obsession with exploring the extraordinary world around me. As a boy, I started out big – and wondered at the universe and its stars; as I got older, I began to focus on the building blocks of life itself. I'm lucky enough that this passion has taken me into the heart of one of the greatest mysteries of our age – and I'm privileged to have an insight into what the future holds in the battle against cancer."



WILDLIFE SPECIAL – KILLER WHALE

Killer whales have a "Jekyll and Hyde" personality. In captivity, they are gentle, playful and intelligent animals that seem to enjoy social interaction with human trainers. In the wild, they form ferocious hunting packs capable of attacking and killing a blue whale, begging the question: which is the real killer whale?

Sir David Attenborough attempts to find out by diving deep into their world as they hunt herring shoals in Norway, catch stingrays in New Zealand, steal tuna from Mediterranean fishing boats and stalk penguins in Antarctica. He reveals that being a killer whale is not an instinctive gift but learned behaviour transmitted from one generation to the next.

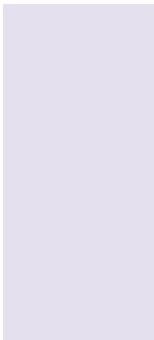
THE HUMAN SENSES

Nigel Marvin, intrepid zoologist and natural history presenter, has spent 20 years poking and prodding his way through the animal kingdom, and now he's ready to confront the most exotic species of all – humans. Nigel goes in search of the biological roots of our senses, to uncover the evolutionary reasons why particular sights, sounds, smells and tastes have such a powerful effect.

On a sensory romp around the globe, Nigel acts as a human guinea pig, experiencing first hand the extremes of sensory perception – from a sound so wonderful it makes him grin with pleasure, to a smell so awful it sends him screaming from the room.

IN SEARCH OF THE BRONTES

Emily and Anne Bronte met their untimely deaths 150 years ago. The world of windswept Yorkshire moors and tragic heroines vividly evoked in novels such as



SUPERWOMAN

In Kuala Lumpur, Malaysia, eight women from across the globe are competing for the title of World's Strongest Woman. Among them are two British mums, and the woman they have to beat is the reigning queen of the strong women: Jill Mills from Texas.

Superwoman follows the story of these three women as they prepare to fight it out for the title. They reveal what makes them want to pull a car up a hill or run 100m carrying the equivalent weight of two small men, and allow viewers to go behind the scenes for the nail-biting final.

TABLOID TALES

Piers Morgan exposes the complex relationships between the stars who hit the headlines and the journalists who write about them.

He casts an insider's eye over the relationship which exists between the tabloid Press and celebrities. Subjects include Paul Burrell, Peter Mandelson and Jade Goody.

Piecing together eyewitness accounts from tabloid journalists, editors and friends, foes and family members, Piers also uncovers the truth behind the stories and reveals how Fleet Street's finest set about covering them.

WATCHING THE DETECTIVES

Four years in the making, this series reveals, for the first time, the inner workings of the criminal justice system with bc 2(T* [(they have to beat is the r)e113.9nal 1al71,t for the tt covering to o fIABLOIDtur)ing to o fIAdsthe titing a Tc4

THE SEARCH FOR THE LOCH NESS MONSTER

Scotland's Loch Ness is the largest body of fresh water in Europe and, according to legend, it is home to a famous monster, too. People from all over the world have been searching for the Loch Ness monster for the last 100 years and found nothing. However, if something in Scotland's biggest loch has survived since the age of the dinosaurs, what would it look like and how would it behave?

Steve Leonard, presenter and veterinary expert, puts his knowledge of animals to use when he follows the first truly comprehensive search for Nessie. He delves deep below the loch's infamous waves to reveal the truth about its mysterious inhabitant.

Using a mixture of 3-D animation, contemporary natural history and innovative science, he explodes the myth of the monster and comes face to face with a creature believed to have died 65 million years ago.

THE PERFECT HOLIDAY

Could a stranger decide on a person's ideal getaway just by looking around their house? The travel experts on *Perfect Holiday* think so. The show asks viewers to nominate someone they know who really deserves a break, and offers them the opportunity of a tailor-made holiday of a lifetime. But, as the lucky person won't know they've

The sights of Chelsea can be seen throughout the week on both BBC One and BBC Two in programmes presented by the nation's favourite gardeners. The BBC follows the show, reports on the winning gardens and previews the latest design techniques.

Gardeners can vote for their favourite garden through the wonders of interactive television, and BBCi also allows viewers a unique view of selected prize gardens.

RETURNING SERIES

AIRPORT

ANIMAL HOSPITAL

BARGAIN HUNT

CHANGING ROOMS

DIY SOS